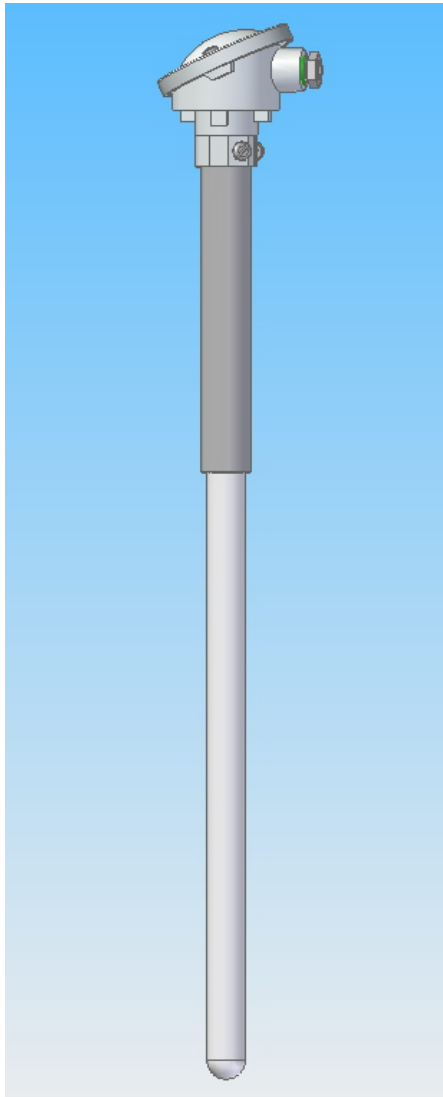


Large straight thermocouples

Form AK (AKK) according to DIN EN 50446

Fitting with replaceable
thermocouple inset

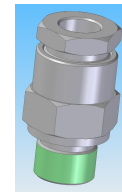
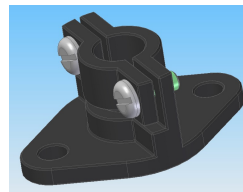


Structure of the fitting:

Structure Form AK in accordance with DIN 50446
Protective tube according to EN 60672, diameter 24 mm of ceramic material "Ker 530", "Ker 610" or "Ker 799";
Neck tube made of surface treated steel of diameter 32 mm and length 200 mm, connection head made of light metal Form A in accordance with EN 50446 (DIN 43729) with cable entry M20x1.5.
(For variants please refer to the worksheet).

Structure of Form AKK, an additional ceramic internal protective tube is installed here specially for thermocouples made of precious metals.

On request, is also available with a stop flange according to DIN 43734 or movable clamp connection;
see catalogue group "Components"



Structure of the inset:

Thermocouples 1 (2) x Type "J", "K", "N", "S" and Type "B";
Basic values according to DIN EN 60584, Tolerance class 1 or 2;
The thermo wires are insulated from each other or even from the protective tube through ceramic capillary pipes – in case of precious metal, they are made of ceramic "Ker 799"; alternatively inset according to DIN 43735 in flexible version as mineral insulated sheathed thermocouple gauge slide of 6 or 8 mm diameter made of stainless steel 1.4541 or Inconel material.
Shelf plate with connection plug-in socket.
(For variants please refer to the worksheet).

Design of the thermocouples:

Max. temperatures according to DIN for materials:

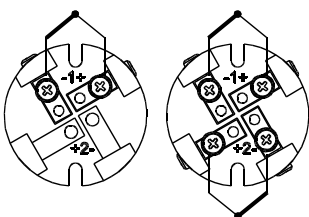
Ceramic "Ker 530" 1500°C

Ceramic "Ker 610" 1500°C

Ceramic "Ker 799" 1600°C

Pressures, temperatures and flow speeds should be taken into account as per DIN or information in the technical data sheets.

Types of wiring:



Element single Element dual

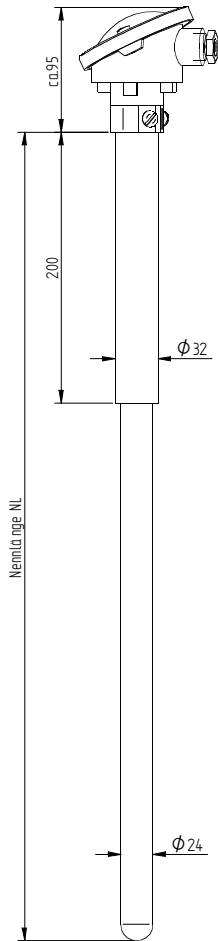
Areas of application:

Power plant technology
Heating technology
Furnace construction
Waste incineration plants:
For emissions from firing plants

Large straight thermocouples

Form AK (AKK) according to EN 50446

Fitting with replaceable thermocouple inset



Protective tube diameter D:

- 24 x 2.5mm (only for Ker610) |☉|
- 24 x 3.0mm (only for Ker799) |☉|
- 26 x 3.0mm (only for Ker530) |☉|
- others _____

Protective tube material:

- Ceramic Type "610" |☉|
- Ceramic Type "799" |☉|
- Ceramic Type "530" |☉|
- others _____

Internal protective pipe: |☉|

Nominal length NL:

- 500mm |☉|
- 710mm |☉|
- 1000mm |☉|
- 1400mm |☉|
- Others _____

Neck tube HL: diameter 32 x 200 mm |☉|

Others _____

Process connection:

- Stop flange (according to DIN 43734, made of GG) |☉|
- Counter flange (according to DIN 43734, made of steel) |☉|
- G1" Clamp connection "GEV" made of steel |☉|
- Others _____

Connection head:

- Form A Light metal |☉|
- Form B Light metal |☉|
- Others _____

Temperature load: Measurement point: from | _____ | to | _____ | °C Environment/Connector head: | _____ | °C

Calculation of the inset length = Nominal length + 40 mm base metal (+ 80 mm precious)

Thermocouple-gauge slide:

- | | | |
|-----------------|-----------|---------|
| NiCr-Ni "K" | single ☉ | dual ☉ |
| NiCrSi-NiSi "N" | single ☉ | dual ☉ |
| PtRh-Pt "S" | single ☉ | dual ☉ |
| PtRh-Pt "B" | single ☉ | dual ☉ |
| PtRh-Pt "R" | single ☉ | dual ☉ |
| Others _____ | | |

Additional specification/ Remarks:

Tolerance class

- Class "2" |☉|
- Class "1" |☉|
- Others _____

Company	: _____	Your Ref.	: _____
Contact person	: _____	Quantity	: _____
Street/Place	: _____	Del. time	: _____
Email address	: _____	Telephone	: _____