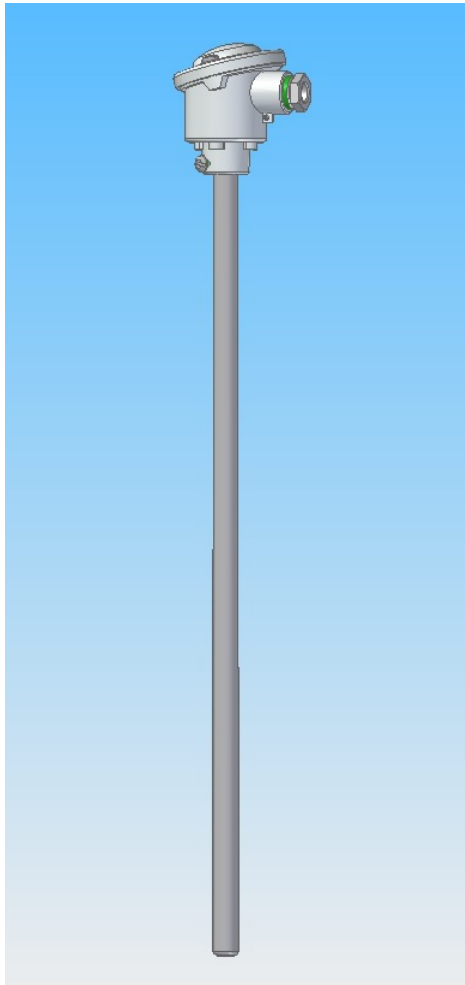


## Immersion thermocouple with metal protective tube

Version BM (BMK) according to DIN EN 50446

Fitting with replaceable thermocouple inset

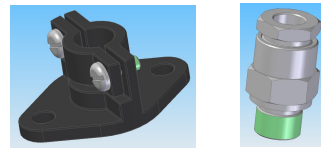


### Structure of the fitting:

BM design according to DIN EN 50446

15 x 2 mm diameter protective tube made of metal, the BMK version, protective metal tube with an internal protective tube made of ceramic is used for thermocouples type "S", "B" or "R".

Protective tube is available on request with stop flange or movable clamp connection; see catalogue group "Components",



Connection head of light metal Form B according to DIN EN 50446 with cable entry M20x1.5. (For variants please refer to the worksheet).

### Structure of the inset:

Thermocouples 1(2) x Type "J", "K", "N", "S" and Type "B"; Basic values in accordance with DIN EN 60584, tolerance class 1 or 2, Type "L" according to DIN 43710;

The thermo wires are insulated from each other or even from the protective tube through ceramic capillary pipes - in case of precious metal they are made of ceramic "Ker 799";

Alternatively, according to DIN 43735: Flexible version of inset as mineral insulated sheathed thermocouple inset with 6 or 8 mm diameter of stainless steel 1.4541 or Inconel material. Shelf plate with connection socket.

(For variants please refer to the worksheet).

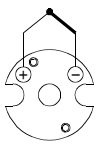
### Design of the thermocouples:

Max. temperatures according to DIN for materials:

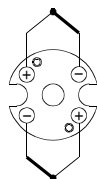
Steel St.35.8	550°C	Material 1.4762	1200°C
Steel enamelled	700°C	Material 1.4841	1200°C
Stainless steel 1.4571	900°C		

Even pressure resistant and high pressure resistant versions can be delivered; Additional type specification "HD". For pressure resistant and stable flow versions, also refer to the section Special versions or ask our technical customer service.

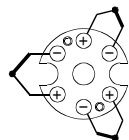
### Types of wiring:



Element single



Element dual



Element triple

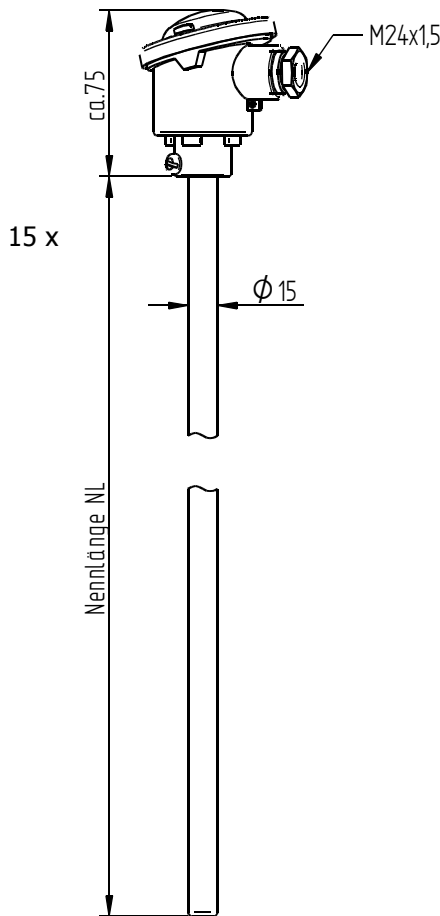
### Areas of application:

Plant, pipeline and tank construction  
 Heating and air conditioning technology  
 Power plant technology  
 Furnace construction  
 Waste incineration plants  
 Chemicals:  
 for gas, steam, fluids and granulates

# Immersion thermocouple with metal protective tube

Version BM (BMK) according to DIN EN 50446

Fitting with replaceable thermocouple inset



### Protective tube diameter D:

9 x 1.0mm |☉|  
 11 x 1.0mm |☉|  
 11 x 2.0mm |☉|  
 12 x 1.5mm |☉|  
 3.0mm |☉|  
 others \_\_\_\_\_

### Protective tube material:

Steel St. 35.8 |☉|  
 1.4571 (V4A) |☉|  
 Stainless steel teflonised |☉|  
 highly heat resistant 1.4762 |☉|  
 1.4841 |☉|  
 others \_\_\_\_\_

### Nominal length NL:

180mm |☉|  
 250mm |☉|  
 355mm |☉|  
 500mm |☉|  
 Others \_\_\_\_\_

### Internal protective tube:

Ceramic Type "610" |☉|  
 Ceramic Type "799" |☉|  
 others \_\_\_\_\_

### Process connection:

Stop flange (according to DIN 43734, made of GG) |☉|  
 Counter flange (according to DIN 43734, made of steel) |☉|  
 G1/2" clamp connection "GEV" of 1.4571 (V4A) |☉|  
 G1" Clamp connection "GEV" of steel |☉|  
 Others \_\_\_\_\_

### Connection head:

Form A Light metal |☉|  
 Form B Light metal |☉|  
 Others \_\_\_\_\_

**Temperature load:** Measurement point: from | | to | | °C Environment/Connector head: | | °C

**Calculation of the inset length = Nominal length + 25mm**

### Thermocouple inset:

NiCr-Ni "K"	single  ☉	dual  ☉
Fe-CuNi "J"	single  ☉	dual  ☉
NiCrSi-NiSi "N"	single  ☉	dual  ☉
PtRh-Pt "S"	single  ☉	dual  ☉
PtRh-Pt "R"	single  ☉	dual  ☉
PtRh-Pt "B"	single  ☉	dual  ☉
Fe-CuNi "L"	single  ☉	dual  ☉
Others	_____	

### Additional specification/ Remarks:

Tolerance class

Class "1" |☉| Class "2" |☉| others \_\_\_\_\_

Company	: _____	Your Ref.	: _____
Contact person	: _____	Quantity	: _____
Street/Place	: _____	Del. time	: _____
Email address	: _____	Telephone	: _____